


|   |   |  |                  |  |                |  |
|---|---|--|------------------|--|----------------|--|
|  | <b>MARIANO MARCOS STATE UNIVERSITY</b>              |  | Document Code    |  | PD-FRM-002     |  |
|   | Procurement Division                                |  | Revision No.     |  | 5              |  |
|   | Request for Quotation (RFQ)<br>(Goods and Services) |  | Effectivity Date |  | April 20, 2022 |  |
| Page 1 of 3   |   |  |                  |  |                |  |

**REQUEST FOR QUOTATION (RFQ)**

Date: 6/6/2022  
 PR No. 2022-06-112 (6730800)

Sir/Madam:

Please quote your lowest price on the item/s listed below, and submit your quotation duly signed by you or your duly authorized representative not later than **3 days** subject to the Terms and Conditions provided at the last page of this RFQ.

Delivery period must be at least within 90 days upon receipt of the Notice to Proceed or Purchase Order.

For any clarification, you may email us at bac@mmsu.edu.ph.

  
**NATHANIEL R. ALBITO**  
 BAC Chair

| ITEM | QTY | Unit | ITEM DESCRIPTION  | ABC/unit   | UNIT PRICE |
|------|-----|------|---|------------|------------|
|      |     |      | <ul style="list-style-type: none"> <li>• "The contractor must provide NEMA3R for the ACCU"</li> <li>3TOR Ceiling Cassette ACU, four-way, inverter type, 4HP, 220-230Volts, single phase similar to Kolin, Koppel, Daikin, etc.</li> <li>Includes/conditions:               <ol style="list-style-type: none"> <li>1. Supply, delivery, installation, and testing of units by accredited aircon installers;</li> <li>2. Installation as to mechanical plan provided;</li> <li>3. Includes equipment, scaffoldings, etc.</li> <li>4. Includes drain, insulation, brackets and supports, electrical from unit to supply provided;</li> <li>5. Preventive maintenance (twice before turn-over) with one-year warranty;</li> <li>6. Site visit is required (for Auditorium section of NBERIC)</li> </ol> </li> </ul> | 230,000.00 |            |
|      | 2   | unit | Transfer Fan similar to exhaust fan, 50 to 120cfm. Complete with  |            | 16,500.00  |

*Disclaimer: Reproduction of this form is allowed subject to compliance to the Documented Information Procedure established by MMSU.*



MARIANO MARCOS STATE UNIVERSITY  
Procurement Division

Request for Quotation (RFQ)  
(Goods and Services)

Document Code

PD-FRM-002

Revision No.

5

Page 2 of 3

Effectivity Date

April 20, 2022

|   |      |   |           |
|---|------|---|-----------|
|   |      | flexible and PVC duct and duct louver   |           |
| 1 | unit | Window type aircon, Full DC inverter, 8900 KJ/H rated cooling capacity (2600-9800), Dim: 450x640x350 (mm) x 28kg, 4.8A, 720W rated power input (220-900), similar to Kolin, Koppel, LG Brands | 27,000.00 |

**TOTAL ESTIMATED BUDGET: Php 750,000.00**

**REMARKS/NOTE:**

---



---



---

After having carefully read and accepted your Terms and Conditions, I/we submit our quotation/s on the item/s at prices indicated above.

Business Name: \_\_\_\_\_  
 Business Address: \_\_\_\_\_  
 Printed Name of the Owner: \_\_\_\_\_  
 TIN: \_\_\_\_\_  
 PhilGEPS Registration Number: \_\_\_\_\_  
 Business Permit: \_\_\_\_\_  
 Omnibus Sworn Statement: \_\_\_\_\_  
 Annual Income Tax Return: \_\_\_\_\_


Signature over Printed Name

Tel. No./Cellphone No./e-mail address

Date

Canvassed by: \_\_\_\_\_

*Disclaimer: Reproduction of this form is allowed subject to compliance to the Documented Information Procedure established by MMSU.*

|   |  |  |                  |                |             |
|---|--|--|------------------|----------------|-------------|
|  | <b>MARIANO MARCOS STATE UNIVERSITY</b><br>Procurement Division |  | Document Code    |                | PD-FRM-002  |
|   | <b>Request for Quotation (RFQ)</b><br>(Goods and Services)     |  | Revision No.     | 5              | Page 3 of 3 |
|   |  |  | Effectivity Date | April 20, 2022 |             |

**TERMS AND CONDITIONS:**

1. Bidders shall provide correct and accurate information required in this form.
2. Bidders may quote for any or all of the items.
3. Bidders shall submit a copy of the following documents along with the Quotation:
  - a. PhilGEPS Registration Number
  - b. Mayor's Permit / Business Permit
  - c. Omnibus Sworn Statement (for ABC's above P 500,000.00)
  - d. Income/Business Tax Return (for ABC's above P 500,000.00)
  - e. Certificate of Public Conveyance (CPC) for vehicle rentals and truckings
4. Price quotation/s, to be denominated in Philippine peso, shall include all taxes, duties and/or levies payable.
5. Quotations exceeding the Approved Budget for the Contract shall be rejected.
6. Award of contract shall be made to the lowest quotation which complies with the minimum technical specifications and other terms and conditions stated herein.
7. Any interlineations, erasures or overwriting shall be valid only if they are signed or initialed by you or any of your duly authorized representative/s.
8. The item/s shall be delivered according to the requirements specified in the Technical Specifications.
9. The University has the right to inspect and/or test the goods to confirm their conformity to the technical specifications.
10. Liquidated damages equivalent to one tenth of one percent (0.1%) of the value of the goods not delivered within the prescribed delivery period shall be imposed per day of delay.

*Disclaimer: Reproduction of this form is allowed subject to compliance to the Documented Information Procedure established by MMSU.*

SITE/LOCATION OF INSTALLATION: UTBEMU

REMARKS:

PRE INSPECTION FOR ELECTRICAL SUPPLY:

OK

NOT OK

RECOMMENDATION:

THE CONTRACTOR MUST  
PROVIDE NEMA 3R FOR  
THE ACQU.

| LOCATION | TYPE OF DEVICES | VOLTAGE TYPE |    |   | WIRE SIZE  |   | PROTECTIVE DEVICE |   | SIZE OF CONDUIT |
|----------|-----------------|--------------|----|---|------------|---|-------------------|---|-----------------|
|          |                 | V            | Φ  |   | sq. mm     |   | A                 |   |                 |
|          | ACU OUTLET      | 230 V        | 3Φ |   | 3.5 sq. mm |   | 20 A              |   |                 |
|          | NEMA 1          |              | 1Φ | ✓ | 5.5 sq. mm | ✓ | 30 A              | ✓ |                 |
|          | NEMA 3R         | 380 V        | 3Φ |   | 8.0 sq. mm |   | 40 A              |   |                 |

**NOTE:**

"SITE/LOCATION" refers to College, Unit, Directorate, etc.

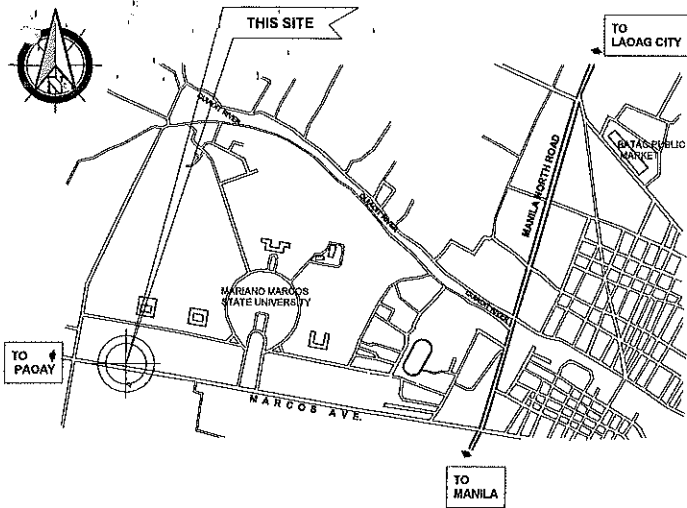
"LOCATION" refers to Rooms, Offices, Laboratories, etc.

Prepared by:

PPGSD ELECTRICIAN

Checked by

FREDDIE MICHAEL S. BALANAY  
Chief PPGSD Electrical Section



1 LOCATION PLAN

**Minimum Design Considerations:**

Auditorium Application similar to theatre

Period: July @ 4pm Solar

Occupant: 75 people @ 450 Btu/h

| Room       | CFM        |              |             | Cooling Capacity |           |        |           | Total Btu/h | Total kJ/h |       |
|------------|------------|--------------|-------------|------------------|-----------|--------|-----------|-------------|------------|-------|
|            | Indoor Air | Infiltration | Ventilation | Air Load         | Lightings | People | Appliance |             |            | Solar |
| Auditorium | 170        | 955          | 1125        | 63426.67         | 800       | 31500  | 2000      | 9772.857143 | 107501     | 12293 |

| Designation | Location | Qty | Description  | Rated Cooling Load, Btu/h | Electrical Characteristics |          |
|-------------|----------|-----|--|---------------------------|----------------------------|----------|
|             |          |     |  |                           | Rated Power, Watts (HP)    | W/phi/hz |
| ACU 5       | As Shown | 3   | 3 D TOR Ceiling Cassette Inverter Air Conditioning, Four-way, (Similar to Koppel, Kolin, Dakin, etc)   | 35,000                    | 3700 (5)                   | 230/150  |
| TF          | As Shown | 2   | Transfer Fan similar to exhaust fan, 50 to 120cfm. Complete with flexible and PVC duct and duct louver | N/A                       | 22W                        | 230/150  |

2 SCHEDULE OF EQUIPMENT

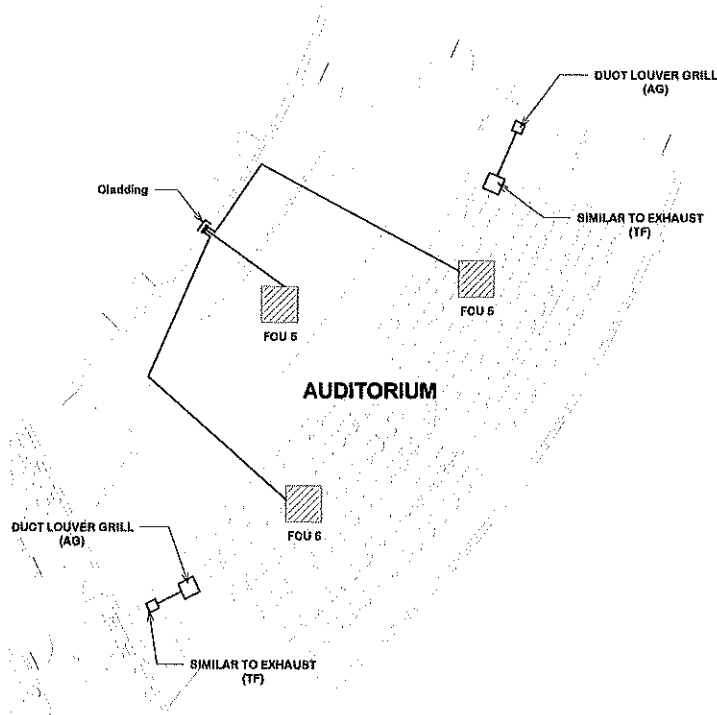
**ABBREVIATION AND UNIT TAG**

ACU AIRCON UNIT  
FCU FAN COIL UNIT  
ACCU AIR-COLLED CONDENSING UNIT

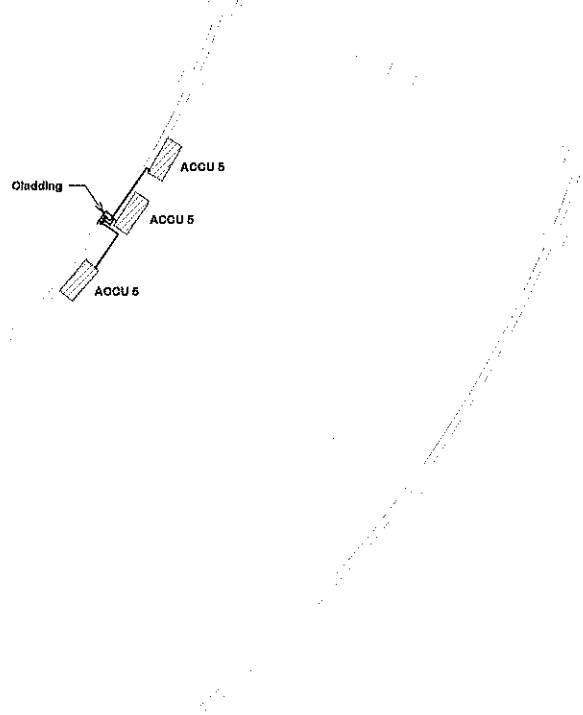
**NOTES**

1. OUTDOOR UNITS IN ROOF TOP, WALL MOUNTED SIMILAR TO EXISTING UNITS.
2. REFRIGERANT LINES THRU CLADDING WITH COMPLETE INSULATIONS, AND SUPPORTS ON CEILING AND CLADDING.
3. DRAINS TO NEAREST MAIN DRAINS.
4. TRANSFER FAN SIMILAR TO EXHAUST FAN COMPLETE WITH INSULATED PVC DUCTING AND GRILLS.
5. REFER TO BAC ON SCOPE OF WORKS

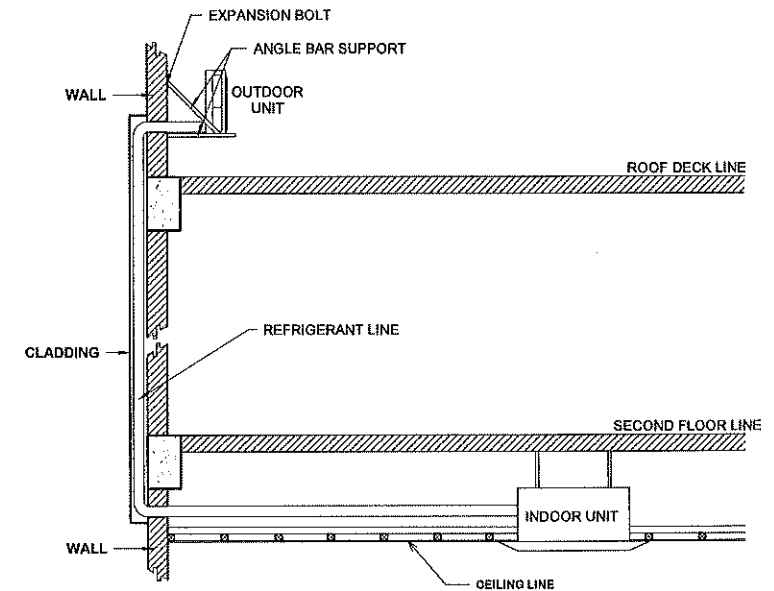
3 GENERAL NOTES



4 GROUND ACU LAYOUT PLAN  
1 : 100 meters



5 ROOF DECK ACCU LAYOUT PLAN  
1 : 100 meters

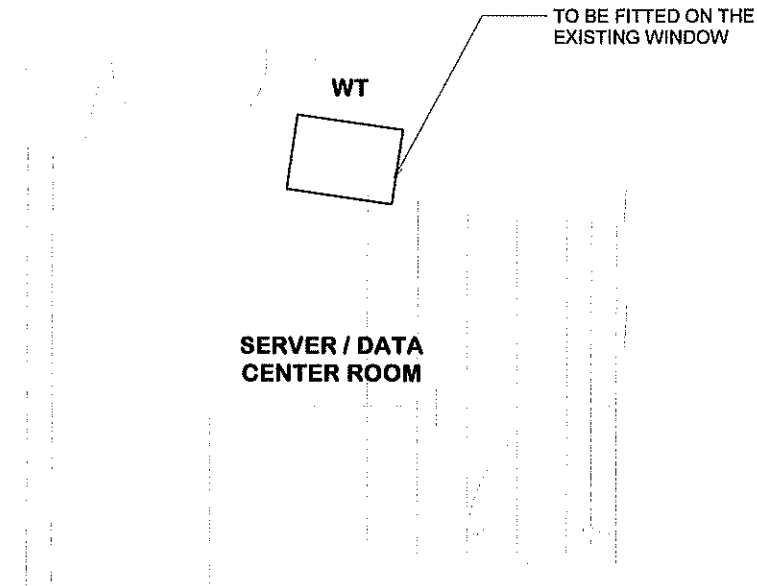


6 AIR-CONDITIONING UNIT DETAIL  
N T S

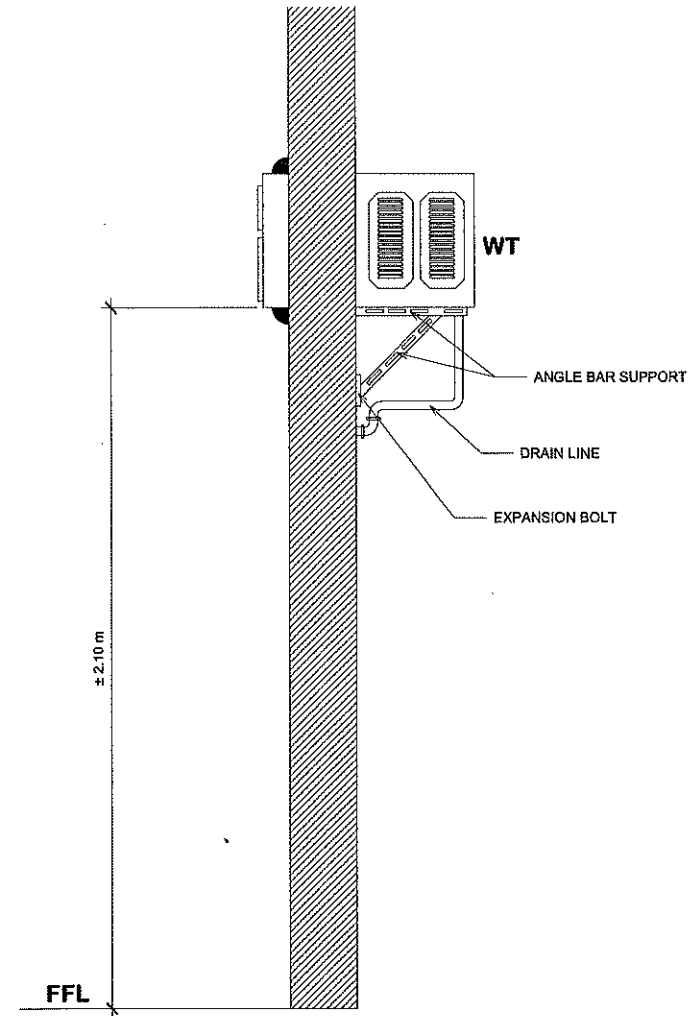
|  |  |   |  |  |               |                  |                     |               |
|--|--|---|--|--|---------------|------------------|---------------------|---------------|
|  | FROM THE OFFICE:<br><b>PHYSICAL PLANNING AND DEVELOPMENT OFFICE</b><br><small>27 102 ADM. BLDG. MARICINA CITY STATE UNIVERSITY<br/>CITY OF BATAK, 2005 L0026 184075<br/>TEL: 045-171794-1511</small> | DRAWN BY:<br>   | SIGNED & SEALED BY:<br><b>NATHANIEL ERICSON B. MATTEO</b><br><small>PROFESSIONAL MECHANICAL ENGINEER</small> | PROJECT TITLE:<br><b>Provision of Air-Conditioning Unit At NBERIC Auditorium &amp; Server Room</b> | CONFORME:<br> | APPROVED BY:<br> | SHEET CONTENTS:<br> | SHEET NO:<br> |
|  | PREPARED BY:<br>   | PRELIM: 004430<br>PTR: 0146231<br>PLACE ISSUED: CITY OF BATAK<br>DATE: JANUARY 03, 2022<br>TEL: 212-527-241 | LOCATION: MMSU-NBERIC - CITY OF BATAK, ILOCOS NORTE  | RECOMMENDING APPROVAL:<br>   | SHEET NO: M-1 |                  |                     |               |

| Air-Conditioning Unit Schedule |                           |     |  |                  |       |     |     |          |
|--------------------------------|---------------------------|-----|--|------------------|-------|-----|-----|----------|
| Designation                    | Location                  | Qty | Description  | Cooling Capacity |       |     | HP  | V/hz/ph  |
|                                |                           |     |  | Btu/h            | Kj/h  | TR  |     |          |
| WT                             | Server / Data Center Room | 1   | Window Type Air-Conditioning Unit, Similar to Kolin, Keppel, LG Brands | 8,398            | 8,000 | 0.8 | 1.0 | 230/60/1 |

① SCHEDULE OF EQUIPMENT

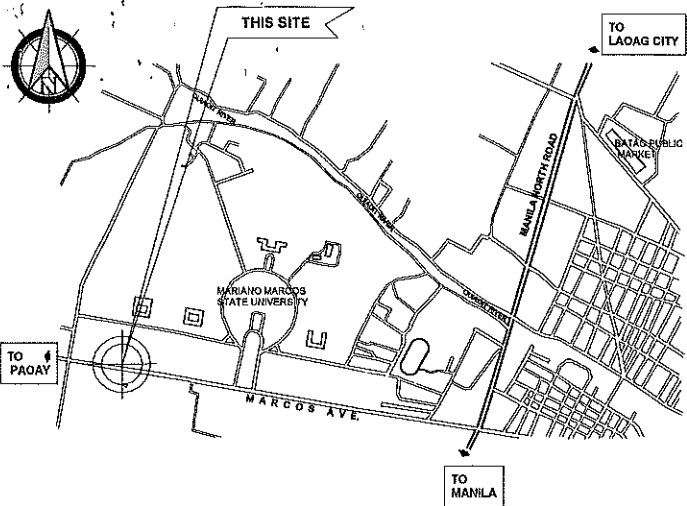


② GROUND FLOOR PARTIAL FLOOR PLAN  
1: 20 meters



③ WINDOW TYPE DETAIL  
1: 10 meters

|  |  |                                 |   |  |  |  |   |  |
|--|--|---------------------------------|---|--|--|--|---|--|
|  | FROM THE OFFICE:   | DRAWN BY:                       | SIGNED & SEALED BY:   | PROJECT TITLE:   | CONFORME:  | APPROVED BY:   | SHEET CONTENTS:   | SHEET NO:  |
|  | <b>PHYSICAL PLANNING AND DEVELOPMENT OFFICE</b><br><small>3/F 302 AERIALATION BLDG. MARICOR MARICOR STATE UNIVERSITY<br/>         CITY OF BATACA, 2504 &amp; 2008 NORTH<br/>         TEL# 8742-143 (077) 41-9191</small> | <small>PREPARED BY:</small><br> | <small>PROF. NO.:</small> 000493<br><small>PHIL.:</small> 016921<br><small>PLACE ISSUED:</small> CITY OF BATACA<br><small>DATE:</small> JANUARY 03, 2022<br><small>TIN:</small> 212-527-141 | <b>NATHANIEL ERICSON B. MATEO</b><br><small>PROFESSIONAL MECHANICAL ENGINEER</small> | <b>Provision of Air-Conditioning Unit At NBERIC Auditorium &amp; Server Room</b> | <small>RECOMMENDING APPROVAL:</small><br><br><b>ROMEO D. ANILAO</b><br><small>ARCHITECT PRCO</small> | <br><b>STANLEY C. ANILAO</b><br><small>UNIVERSITY PROFESSOR</small> | <small>Overseas and local laws, decrees and other contract documents shall prevail, insofar as a conflict, in the absence of specific provisions, over the provisions of these specifications. It shall be the responsibility of the contractor to provide a copy of all applicable laws, decrees and other contract documents for review by the architect prior to the execution of the contract. The architect shall be responsible for the accuracy of the information provided in these specifications. The architect shall be responsible for the accuracy of the information provided in these specifications.</small> |



1 LOCATION PLAN

**Minimum Design Considerations:**

Auditorium Application similar to theatre

Period: July @ 4pm Solar

Occupant: 75 people @ 450 Blu/ft

| Room       | CFM        |              |             | Cooling Capacity |          |        |           | Total Bulb  | Total kJ/h |       |
|------------|------------|--------------|-------------|------------------|----------|--------|-----------|-------------|------------|-------|
|            | Indoor Air | Infiltration | Ventilation | Air Load         | Lighting | People | Appliance |             |            | Solar |
| Auditorium | 170        | 655          | 1125        | 93428.57         | 800      | 31500  | 2000      | 9772.857143 | 107501     | 12263 |

| Designation | Location | Qty | Description  | Rated Cooling Load, Bluh | Electrical Characteristics |         |
|-------------|----------|-----|--|--------------------------|----------------------------|---------|
|             |          |     |  |                          | Rated Power, Watts (RP)    | V/Ph/Hz |
| ACU 6       | As Shown | 3   | 3.0 TOR Ceiling Cassette Inverter Air Conditioning, Four-way, (Similar to Koppe), (Kolin, Daikin, etc) | 38,000                   | 3700 (5)                   | 230/160 |
| TF          | As Shown | 2   | Transfer Fan similar to exhaust fan, 50 to 120dcm. Complete with flexible and PVC duct and duct louver | N/A                      | 220V                       | 230/160 |

2 SCHEDULE OF EQUIPMENT

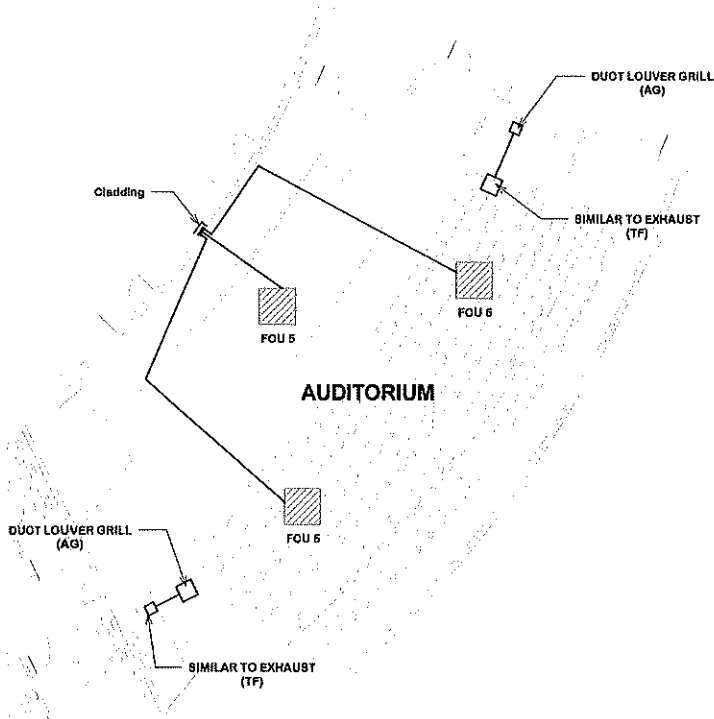
**ABBREVIATION AND UNIT TAG**

ACU AIRCON UNIT  
 FOU FAN COIL UNIT  
 ACCU AIR-COLLED CONDENSING UNIT

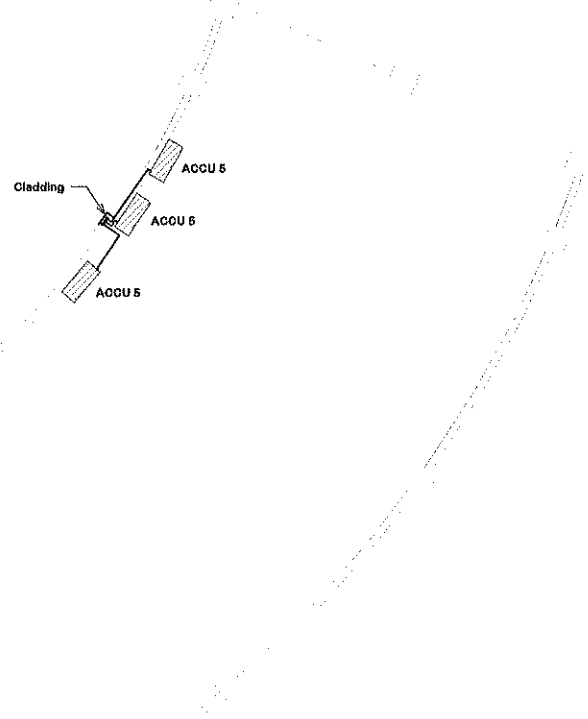
**NOTES**

1. OUTDOOR UNITS IN ROOF TOP, WALL MOUNTED SIMILAR TO EXISTING UNITS.
2. REFRIGERANT LINES THRU GLADDING WITH COMPLETE INSULATIONS, AND SUPPORTS ON CEILING AND CLADDING.
3. DRAINS TO NEAREST MAIN DRAINS.
4. TRANSFER FAN SIMILAR TO EXHAUST FAN COMPLETE WITH INSULATED PVC DUCTING AND GRILLS.
5. REFER TO BAC ON SCOPE OF WORKS

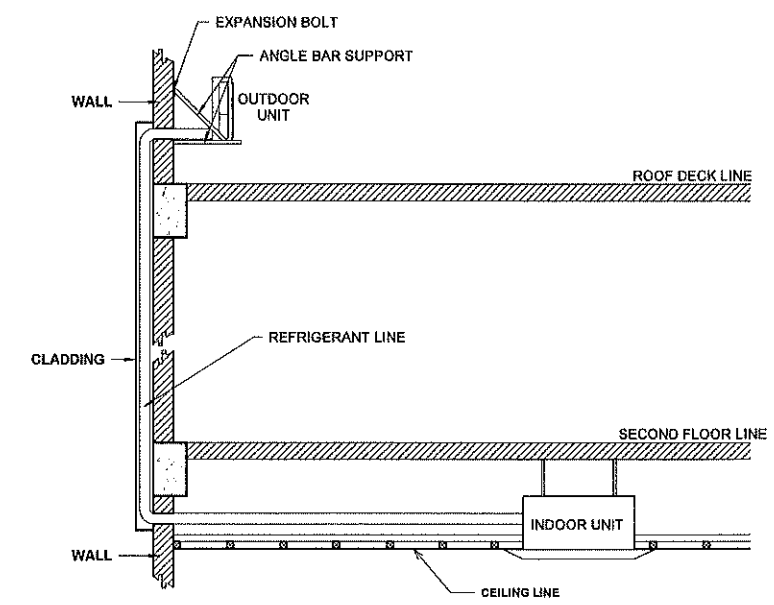
3 GENERAL NOTES



4 GROUND ACU LAYOUT PLAN  
1 : 100 meters

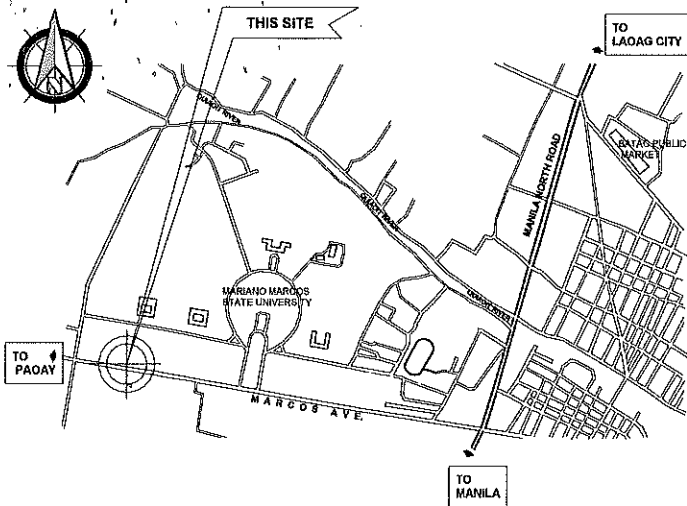


5 ROOF DECK ACCU LAYOUT PLAN  
1 : 100 meters



6 AIR-CONDITIONING UNIT DETAIL  
N T S

|   |   |   |  |  |  |                                    |                 |                         |
|---|---|---|--|--|--|------------------------------------|-----------------|-------------------------|
| <p><b>PHYSICAL PLANNING AND DEVELOPMENT OFFICE</b><br/>         39F 302 ADELPHI EXHIBITION BUILDING, MARCOS STATE UNIVERSITY<br/>         CITY OF BATAAC, LLOCOB NORTE<br/>         TEL: (042) 443-1771/1792-3191</p> | FROM THE OFFICE:<br><b>PHYSICAL PLANNING AND DEVELOPMENT OFFICE</b> | DRAWN BY:<br><b>BJAYAN BAYANG</b><br>ENGINEER   | SIGNED & SEALED BY:<br><b>NATHANIEL ERICSON R. MATEO</b><br>PROFESSIONAL MECHANICAL ENGINEER | PROJECT TITLE:<br><b>Provision of Air-Conditioning Unit At NBERIC Auditorium &amp; Server Room</b> | CONFORME:<br><b>ROBERTA CLEP</b><br>ENGINEER   | APPROVED BY:<br><b>[Signature]</b> | SHEET CONTENTS: | SHEET NO:<br><b>M-1</b> |
|   | PREPARED BY:<br><b>[Signature]</b>                                  | PROJECT NO.: 000493<br>PIR: 0199231<br>PLACE ISSUED: CITY OF BATAAC<br>DATE: JANUARY 03, 2022<br>TEL: 212-327-241 | LOCATION: MIMBU-NBERIC - CITY OF BATAAC, LLOCOB NORTE  | RECOMMENDING APPROVAL:<br><b>[Signature]</b><br><b>ROMEO B. DUBULAO</b><br>ENGINEER                | APPROVED BY:<br><b>[Signature]</b><br><b>SIMILEY C. AQUINO</b><br>UNIVERSITY PRESIDENT | SHEET NO: M-1                      |                 |                         |



1 LOCATION PLAN

**Minimum Design Considerations:**

Auditorium Application similar to theatre

Period: July @ 4pm Solar

Occupant: 75 people @ 450 Btu/h

| Room       | CFM        |              |             | Cooling Capacity |           |        |           | Total Btu/h | Total kWh |       |
|------------|------------|--------------|-------------|------------------|-----------|--------|-----------|-------------|-----------|-------|
|            | Indoor Air | Infiltration | Ventilation | Air Load         | Lightings | People | Appliance |             |           | Solar |
| Auditorium | 170        | 655          | 1125        | 63428.67         | 800       | 31500  | 2000      | 9772.857143 | 107501    | 12253 |

| Designation | Location | Qty | Description   | Rated Cooling Load, Btu/h | Electrical Characteristics |          |
|-------------|----------|-----|---|---------------------------|----------------------------|----------|
|             |          |     |   |                           | Rated Power, W/VA (HP)     | V/Ph/Hz  |
| ACU 5       | As Shown | 3   | 3.0 TOR Ceiling Cassette Inverter Air Conditioning, Four-way, (Similar to Koppel, Koiki, Daikin, etc) | 36,000                    | 3700 (5)                   | 230/1/60 |
| TF          | As Shown | 2   | Transfer Fan similar to exhaust fan, 60 to 120cm. Complete with flexible and PVC duct and duct louver | N/A                       | 22W                        | 230/1/60 |

2 SCHEDULE OF EQUIPMENT

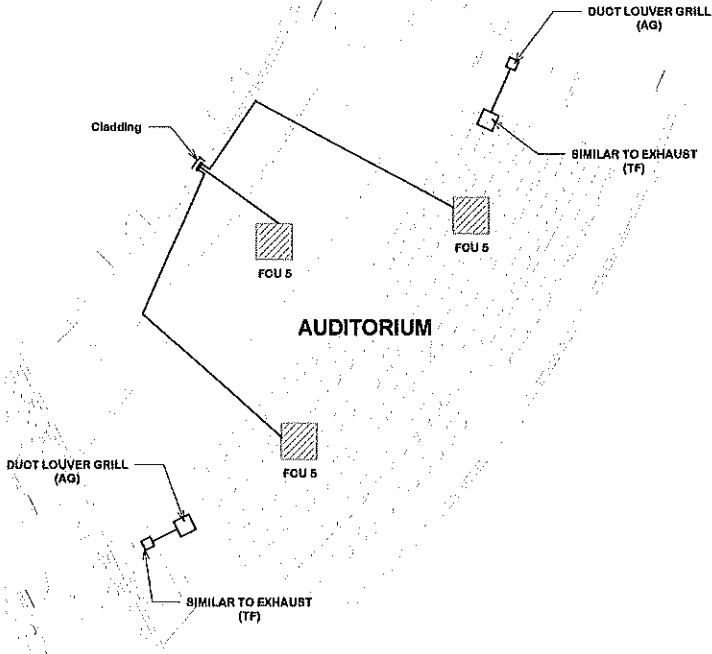
**ABBREVIATION AND UNIT TAG**

ACU AIRCON UNIT  
 FCU FAN COIL UNIT  
 ACCU AIR-COLLED CONDENSING UNIT

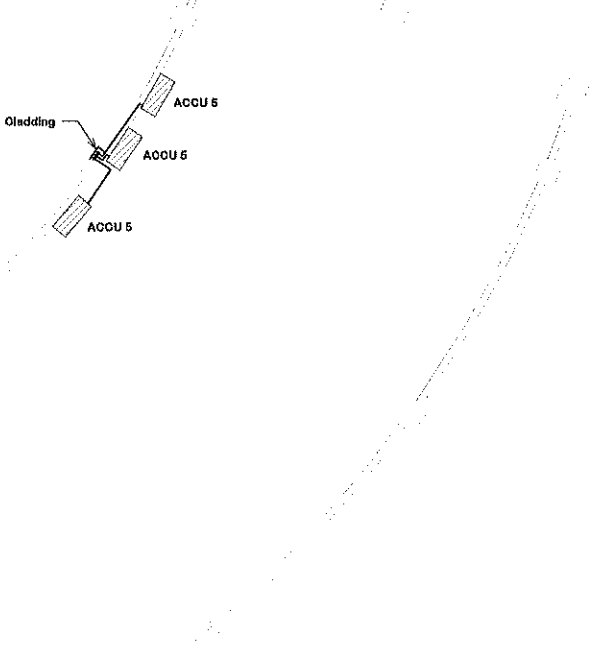
**NOTES**

1. OUTDOOR UNITS IN ROOF TOP, WALL MOUNTED SIMILAR TO EXISTING UNITS.
2. REFRIGERANT LINES THRU CLADDING WITH COMPLETE INSULATIONS, AND SUPPORTS ON CEILING AND CLADDING.
3. DRAINS TO NEAREST MAIN DRAINS.
4. TRANSFER FAN SIMILAR TO EXHAUST FAN COMPLETE WITH INSULATED PVC DUCTING AND GRILLS.
5. REFER TO BAC ON SCOPE OF WORKS

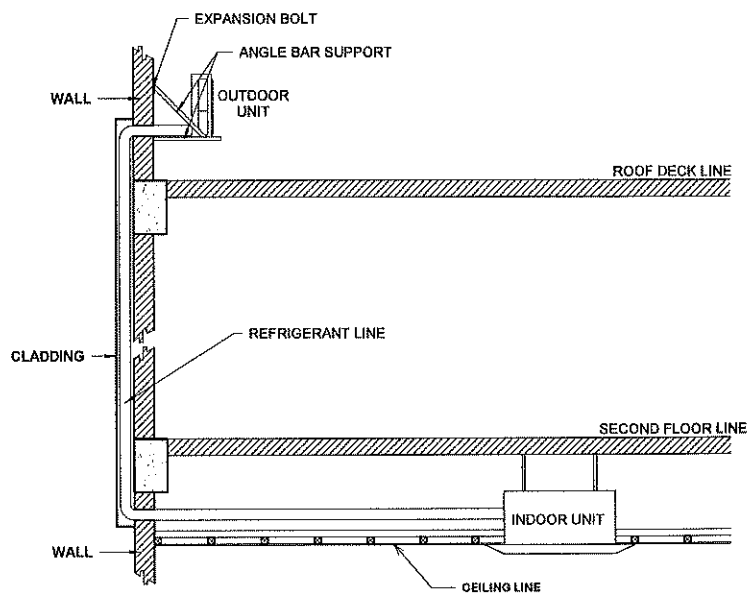
3 GENERAL NOTES



4 GROUND ACU LAYOUT PLAN  
1 : 100 meters



5 ROOF DECK ACCU LAYOUT PLAN  
1 : 100 meters



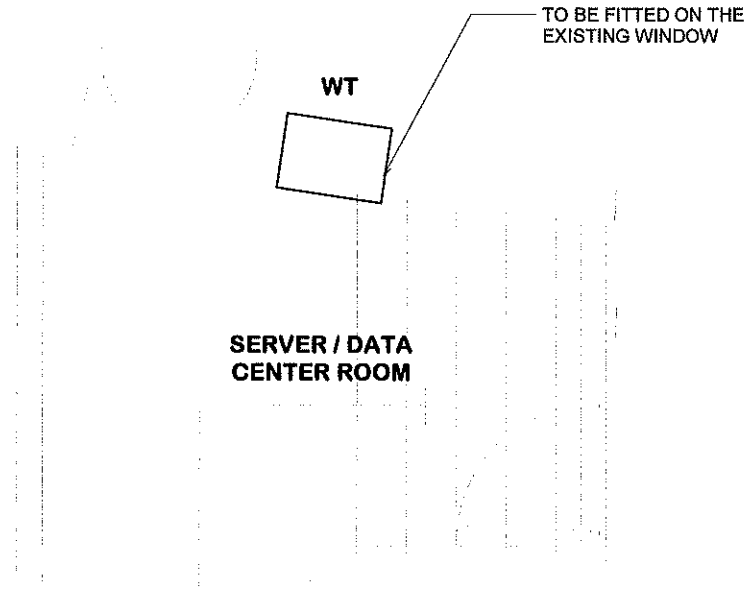
6 AIR-CONDITIONING UNIT DETAIL  
N T S

|  |  |  |   |  |   |   |                     |                         |
|--|--|--|---|--|---|---|---------------------|-------------------------|
|  | FROM THE OFFICE:<br><b>PHYSICAL PLANNING AND DEVELOPMENT OFFICE</b><br><small>197 703 ADMINISTRATIVE BLDG. MARCOS STATE UNIVERSITY<br/>         CITY OF BATAAG, 2304 B.C. 0208, ILOCOS NORTHE<br/>         TEL: (941) 415 277/333-3191</small> | DRAWN BY:<br><b>ILMANG</b>   | SIGNED & SEALED BY:<br><b>NATHANIEL ERICSON IL MATEO</b><br><small>PROFESSIONAL MECHANICAL ENGINEER</small> | PROJECT TITLE:<br><b>Provision of Air-Conditioning Unit At NBERIC Auditorium &amp; Server Room</b> | CONFORME:<br><b>ROSAVEL PLEP</b><br><small>INSPECTOR, INSPEC</small>            | APPROVED BY:<br>  | SHEET CONTENTS:<br> | SHEET NO:<br><b>M-1</b> |
|  | PREPARED BY:<br>   | PRC NO.: 004333<br>PTR: 0162871<br>PLACE ISSUED: CITY OF BATAAG<br>DATE: JANUARY 08, 2022<br>TN: 212-227-741 | LOCATION: NIMBU-NBERIC - CITY OF BATAAG, ILOCOS NORTHE  | RECOMMENDING APPROVAL:<br>   | APPROVED BY:<br><b>SHIRLEY C. AGUILAR</b><br><small>REGISTERED ENGINEER</small> | <small>Drawings and specifications and other essential documents shall remain the property of the architect or engineer or shall be used only for the project for which they were prepared and shall not be used for any other project or purpose without the written consent of the architect or engineer. The architect or engineer shall not be held responsible for any errors or omissions in the drawings or specifications or for any consequences arising therefrom, whether or not such errors or omissions are caused by negligence or otherwise.</small> |                     |                         |

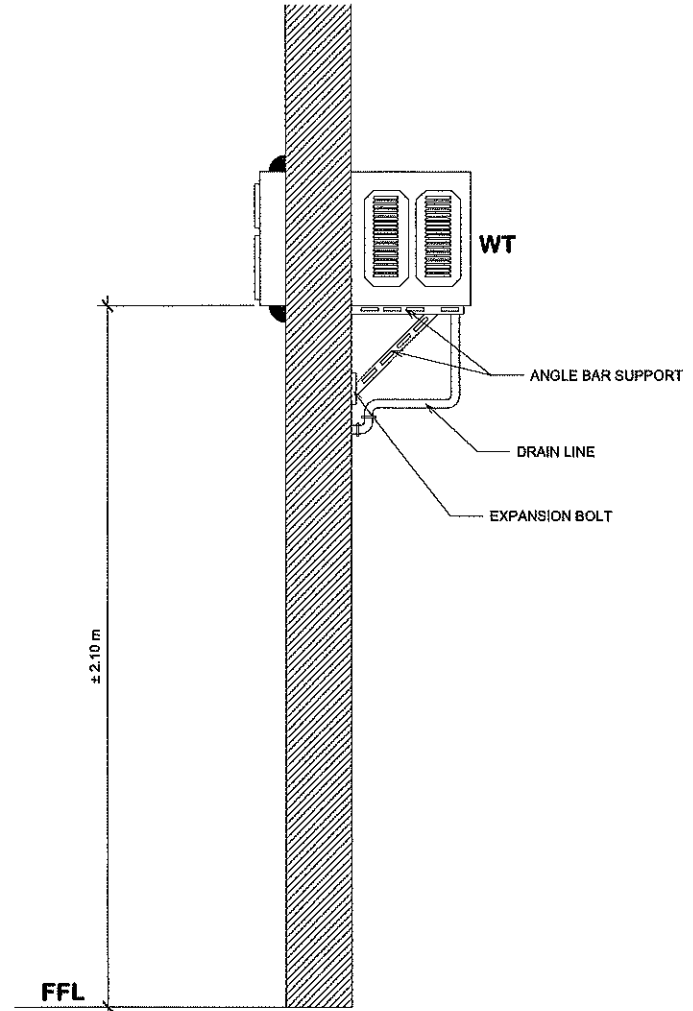


| Air-Conditioning Unit Schedule |                           |     |  |                  |       |     |     |          |
|--------------------------------|---------------------------|-----|--|------------------|-------|-----|-----|----------|
| Designation                    | Location                  | Qty | Description  | Cooling Capacity |       |     | HP  | Vhz/ph   |
|                                |                           |     |  | GWh              | Kj/h  | TR  |     |          |
| WT                             | Server / Data Center Room | 1   | Window Type Air-Conditioning Unit, Similar to Kolin, Koppol, LG Brands | 8,306            | 8,900 | 0.0 | 1.0 | 230/60/1 |

1 SCHEDULE OF EQUIPMENT



2 GROUND FLOOR PARTIAL FLOOR PLAN  
1 : 20 meters



3 WINDOW TYPE DETAIL  
1 : 10 meters



FROM THE OFFICE:  
**PHYSICAL PLANNING AND DEVELOPMENT OFFICE**  
37F 202 ADMAR BLDG. MARINO BUNCON BATA UNIV. CITY OF BATAQ, ILOCOS NORTE  
TELEFAX: 145 77781341

DRAWN BY:  
**JOAQUIN ZAVANG**  
PREPARED BY:  
*[Signature]*

SIGNED & SEALED BY:  
**NATHANIEL ERICSON R. MATEO**  
PROFESSIONAL MECHANICAL ENGINEER  
PREGO: 02469  
PIR: 019521  
PLACE ISSUED: CITY OF BATAQ  
DATE: JANUARY 03, 2012  
TEL: 212-237-741

PROJECT TITLE:  
**Provision of Air-Conditioning Unit At NBERIC Auditorium & Server Room**  
LOCATION: **MMBU-NBERIC - CITY OF BATAQ, ILOCOS NORTE**

CONFORME:  
**ROQUE A. UTEP**  
RECOMMENDING APPROVAL:  
**ROMEO B. BULAO**

APPROVED BY:  
*[Signature]*  
**SURBLEY C. AGUIRRE**  
UNIVERSITY PRESIDENT

SHEET CONTENTS:  
Designs and specifications and other contract documents shall remain the property of the architect, whether or not they are made a part of the contract. It shall be the responsibility of the contractor to check the drawings and specifications for any errors or omissions. He shall be responsible for the completion of the contract documents, and shall be liable for any errors or omissions. He shall be liable for any errors or omissions. He shall be liable for any errors or omissions.

SHEET NO:  
**M-2**